

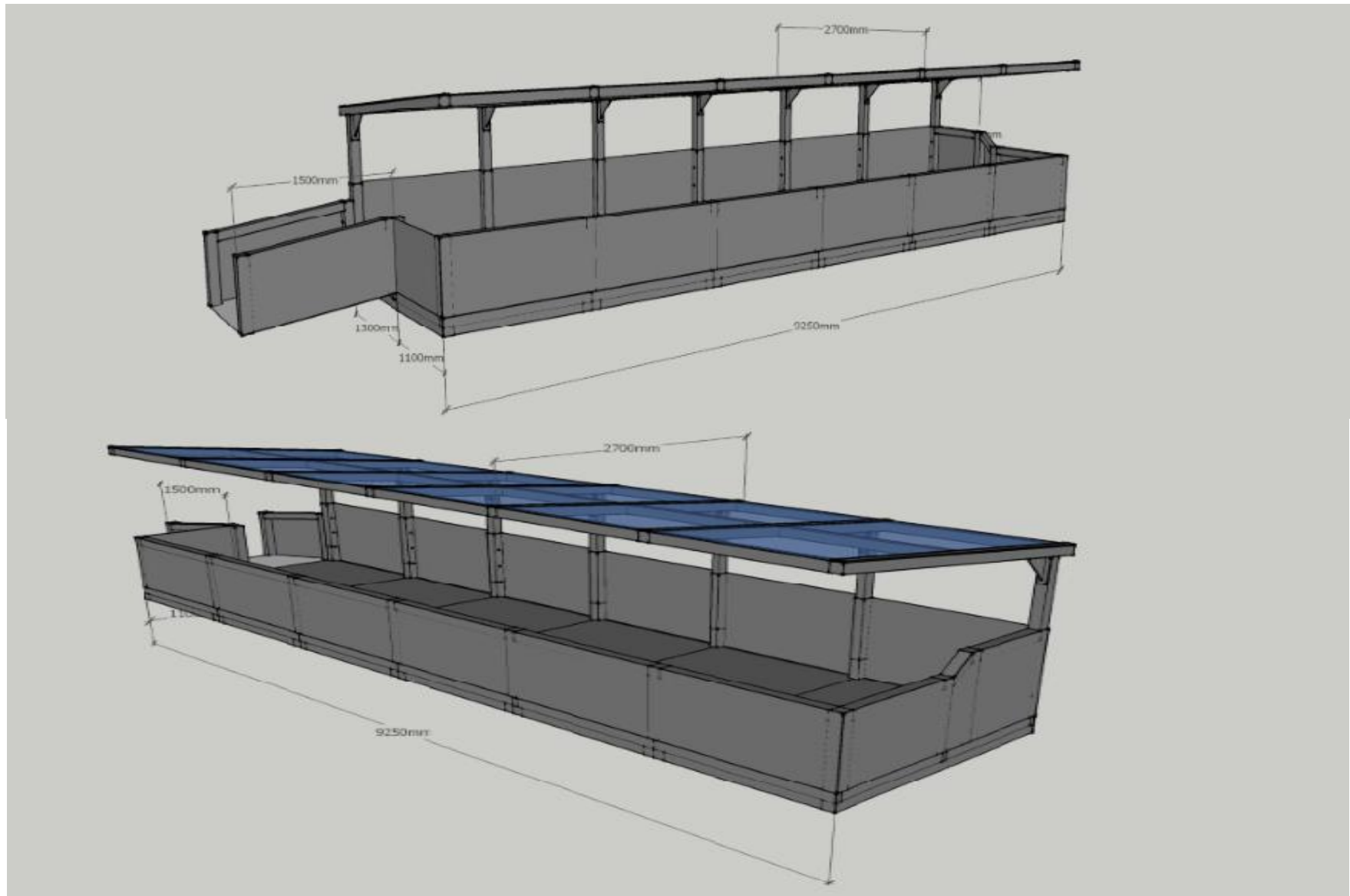


TRUST IN YELLOW

DISABLED VIEWING PLATFORM

shoreside
architects





SPECIFICATIONS

- All of our shelters are constructed from high-grade aluminium extrusion BS EN 755 (1-9) that once powder coated BS EN ISO 9002 to your chosen RAL or BS colour will give a long lasting, low maintenance corrosion free finish.
- All structures will be dug into concrete pockets below the surface and top finished in the present surface material whether it is a flagstone area, tarmac or block paving.
- All structures are guaranteed for Ten years and will **NOT** rust like steel shelters.
- The Mono-Pitch Roof will be constructed from high grade extruded aluminium section and glazed in 10mm Twin Wall Polycarbonate.
- The main base frame of the structure will be constructed from high grade 150mm x 100mm and 150mm x 50mm extruded aluminium section with a polyester powder coated finish. A choice of colours is available (yellow??).
- The side panels of the structure will utilise aluminium cladding panels for ease of maintenance and safety purposes.
- The structure will be manufactured into six sections and fixed together to allow for ease of movement as requested, whilst still maintaining its stability in all weather conditions.

NEW DISABLED VIEWING PLATFORM:PRICE&PROPOSED FUNDING PLAN

MAXIMUM BUILDING COST (B&C) :£14,990.00- Price Includes Design, Manufacture and Installation

ARCHITECT FEES (SHORESIDE) :£550

MAXIMUM TOTAL COST = £15,540

FUNDING PLAN

FOOTBALL STADIA IMPROVEMENT FUND APPLICATION VIA SFC = £7770

TRUST IN YELLOW CONTRIBUTION (MAXIMUM)= £7770**

****TO BE RAISED FROM TRUST RESERVES, FUNDRAISING, BAR PROFITS& SPONSORSHIP**